

TOGETHER
WE BUILD



St. Lorenz
LUTHERAN CHURCH & SCHOOL

*And they said,
“Let us rise up and build.”
So they strengthened
their hands for the good
work.*

Nehemiah 2:18



St. Lorenz
LUTHERAN CHURCH & SCHOOL

For the past 180 years, St. Lorenz Lutheran Church and School has faithfully answered the call to not only provide a Christ-centered education, but an education built on high expectations and lifelong relationships.

In the last three years, we have added three amazing teachers to provide students with loving guidance (and a safe environment to learn and develop). Due to our commitment to building personal relationships with each student and expanding curriculum opportunities, we have filled all of our available space.

We want to make sure that we continue to offer families a school where Jesus is shared, others are served, and students are given many experiences for academic and spiritual growth.

In His Service,

Leah Knoll

School Principal



Together We Build is not about
repairing something broken—
it's about **strengthening** the
foundation of **who we are.**



St. Lorenz
LUTHERAN CHURCH & SCHOOL



Together We Build



Christ-Centered Education

Every day, children experience the Gospel and learn how to live as disciples of Jesus.



Strong Academic Foundation

Our students are equipped for continued education with the skills, confidence, and character to succeed.



Creativity and Character

Through art, music, physical education, and technology, we develop God-given talents for His glory.



Generational Impact

These upgrades will bless families today and for decades to come.



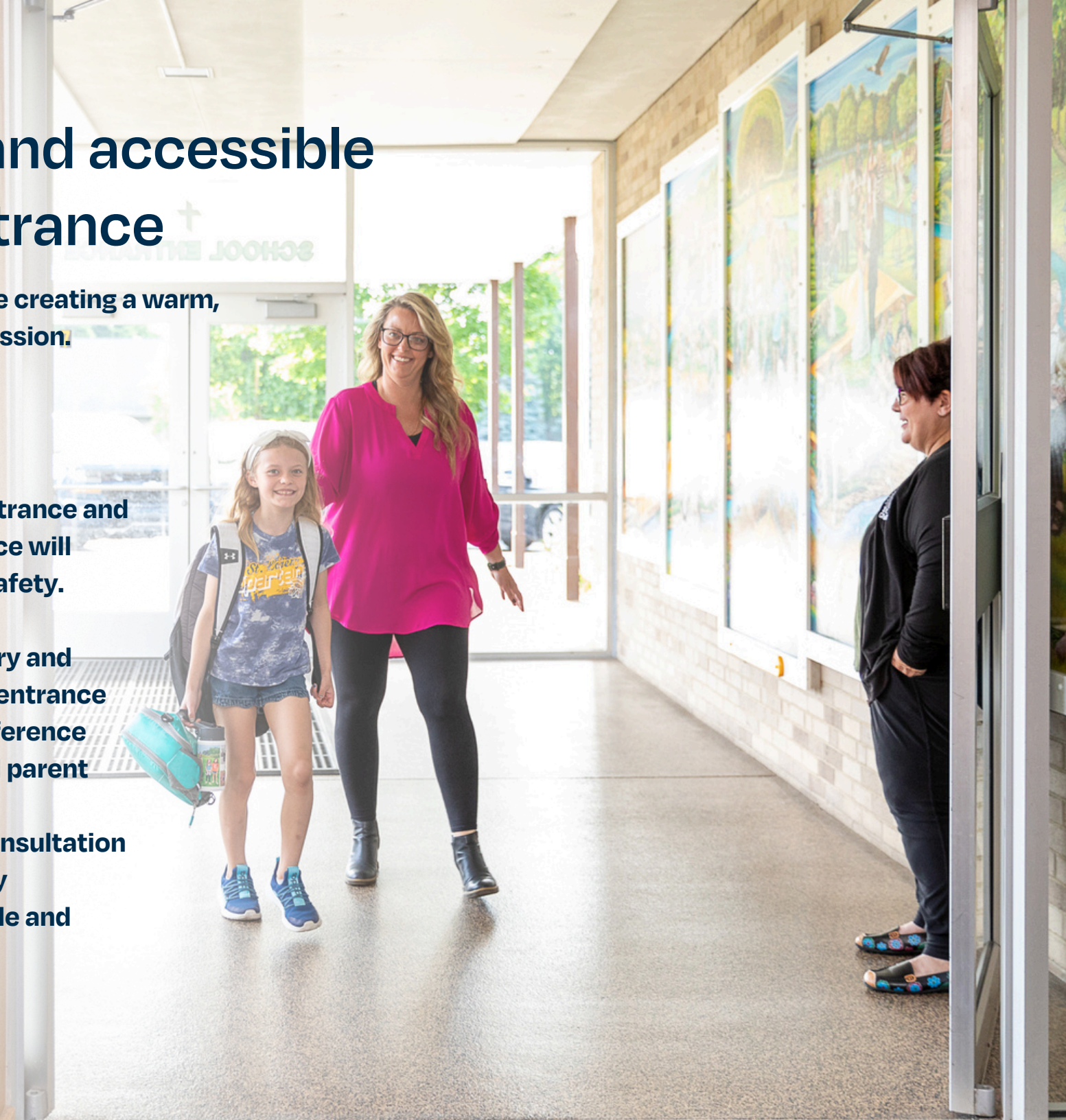
St. Lorenz
LUTHERAN CHURCH & SCHOOL

A secure and accessible school entrance

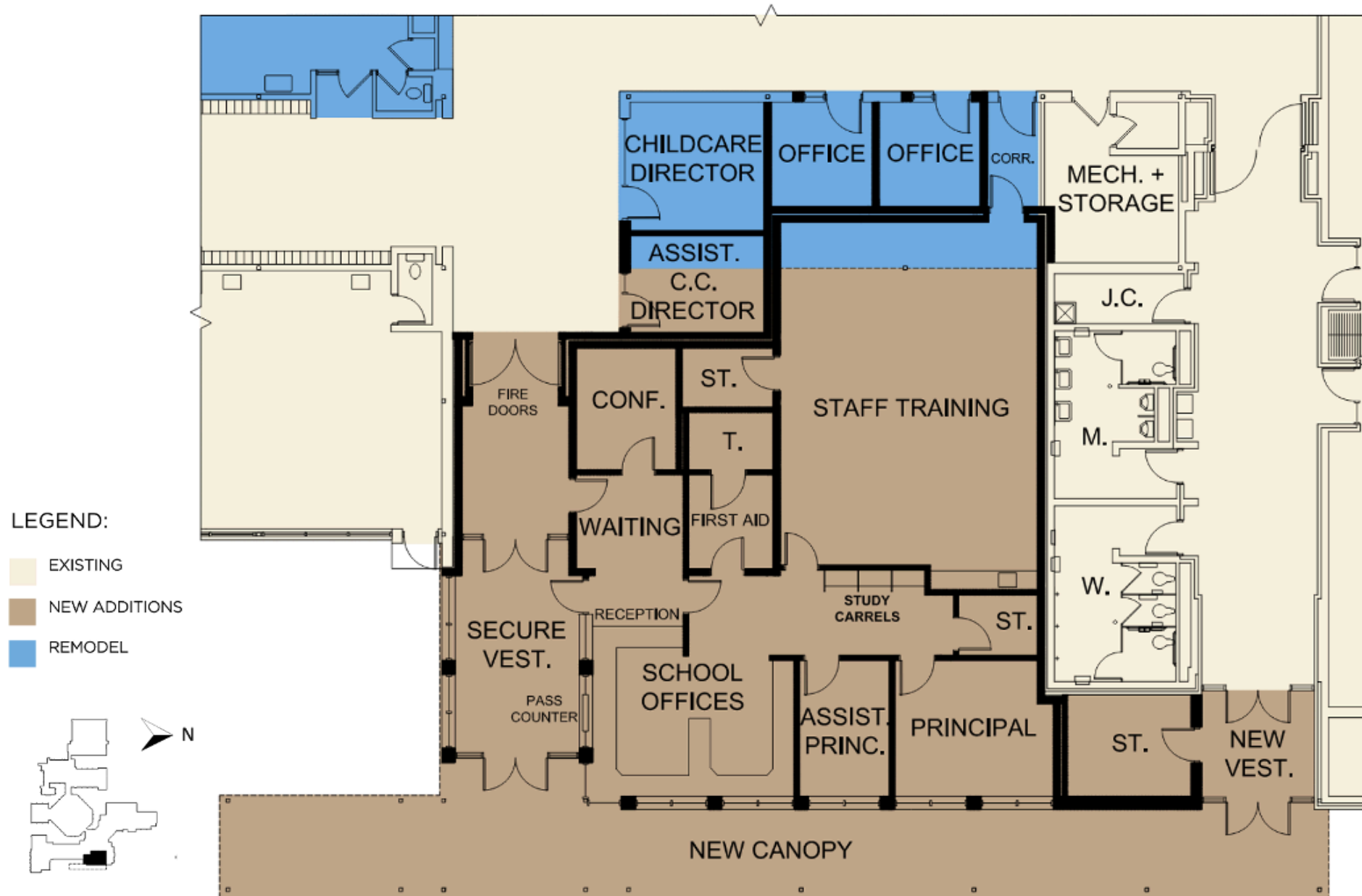
Improving safety while creating a warm, welcoming first impression.

A secure new main entrance and redesigned office space will improve access and safety.

- **Secure visitor entry and separate student entrance**
- **New training/conference room for staff and parent meetings**
- **Therapy space, consultation room, and sick bay**
- **Expanded vestibule and storage space**



A secure and accessible school entrance



A secure and accessible school entrance



Additional Classrooms

Relationship-centered student-teacher ratios builds strong Christian relationships for better learning, behavior, faith growth, and parent connections.

Plan for four new classrooms to be added: three for 1st grade and one Maker Space for all elementary students to engage in creative, hands-on learning. Also includes a new preschool room and a new family bathroom in the Early Childhood Wing.

- **Enables three classes per grade (1–5)**
- **Provides separate, dedicated rooms for preschool and childcare (currently shared)**
- **Staffing Impact: One additional elementary teacher**



Additional Classrooms

Three new 1st grade classrooms with bathrooms, a Maker Space, and small group instruction room.

LEGEND:

- EXISTING
- NEW ADDITIONS
- REMODEL



Additional Classrooms

1st Grade Classrooms

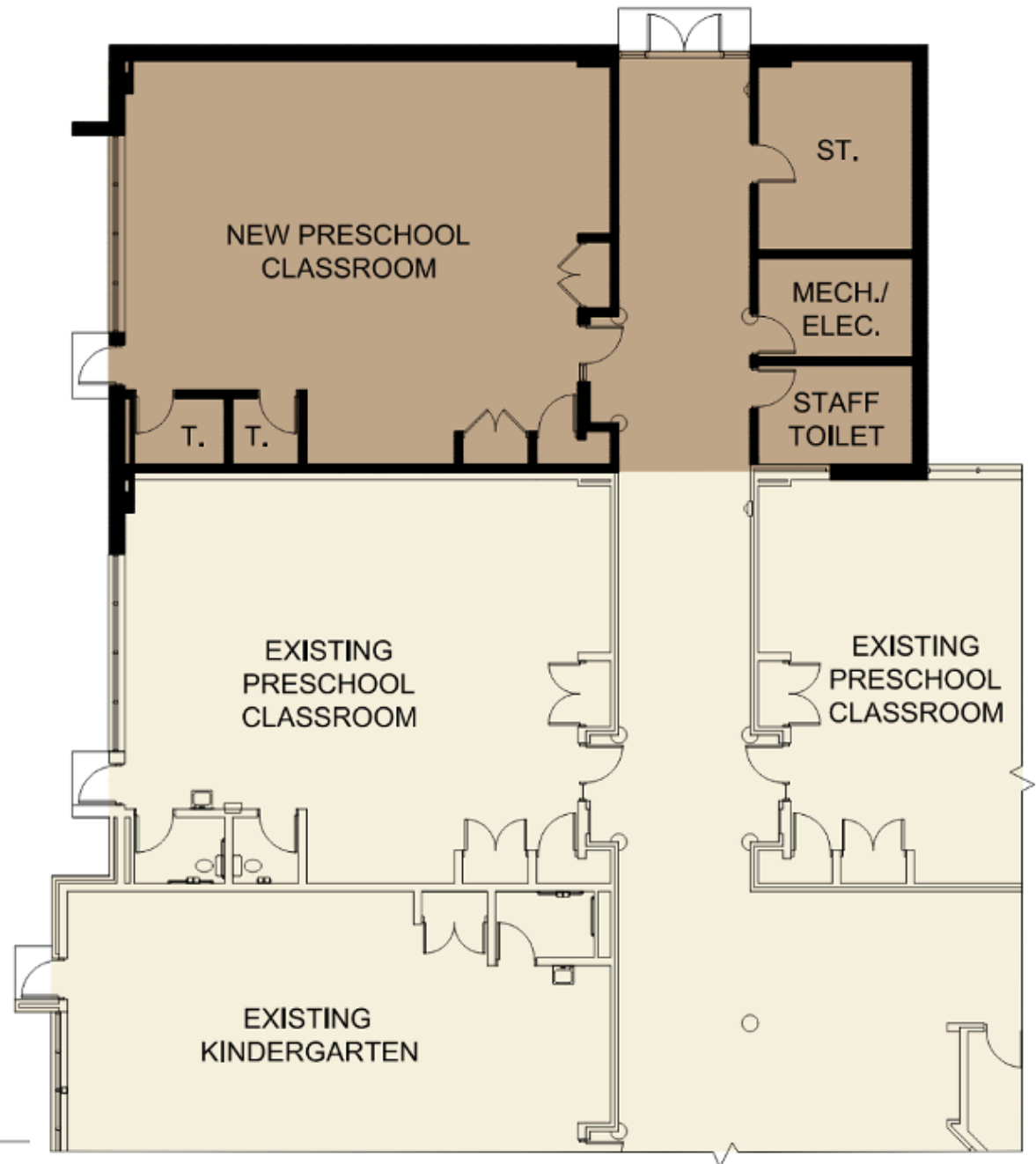
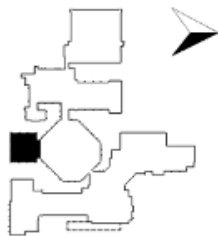


Additional Classrooms

One new preschool classroom, storage room, and family bathroom in Early Childhood Wing

LEGEND:

- EXISTING
- NEW ADDITIONS



Additional Classrooms

Preschool Classroom



New learning spaces

Adding new spaces for a more vibrant and modern learning environment.

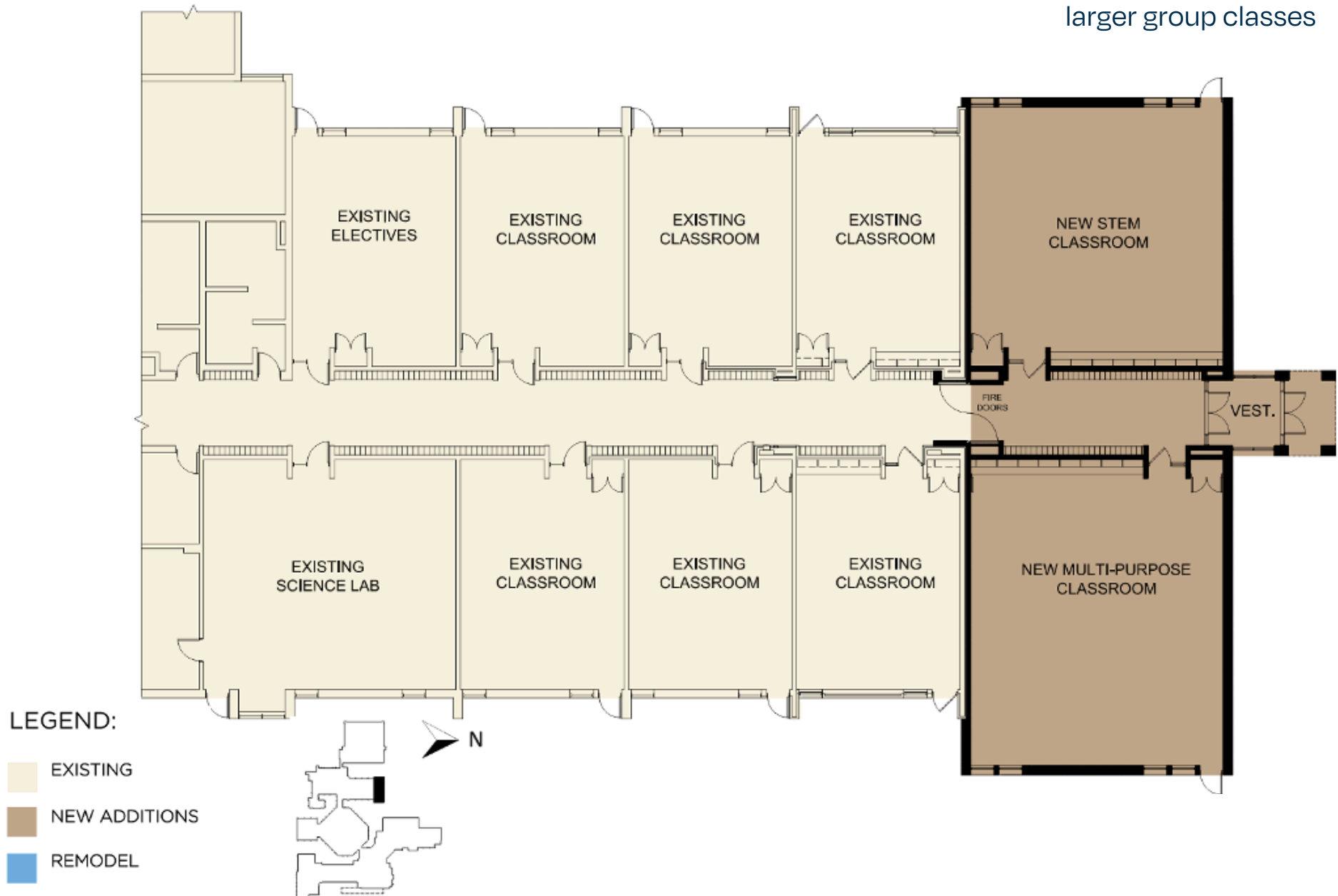
A new multi-use classroom and a STEM lab added to the middle school wing.

- **Large Multi-Use Classroom (1,580 ft²)** for combined classes and events
- **Replaces the use of the unsecured Adult Education room**
- **STEM Classroom** for robotics, engineering, electronics, 3D printing, and more
- **Staffing Impact: No additional staff required**



New learning spaces

Adding two new classrooms in middle school hallway for STEM activities and to accomodate larger group classes



New learning spaces



Additional offices and maintenance upgrades

Supporting our school, staff, and administration.

Additional office spaces for our leaders and expanded spaces to support our maintenance and custodial equipment.

- Relocated offices for Principal, Assistant Principal, and Early Childhood Directors
- New custodial equipment room to accommodate modern equipment, including floor cleaners
- Maintenance shop addition to improve safety and storage

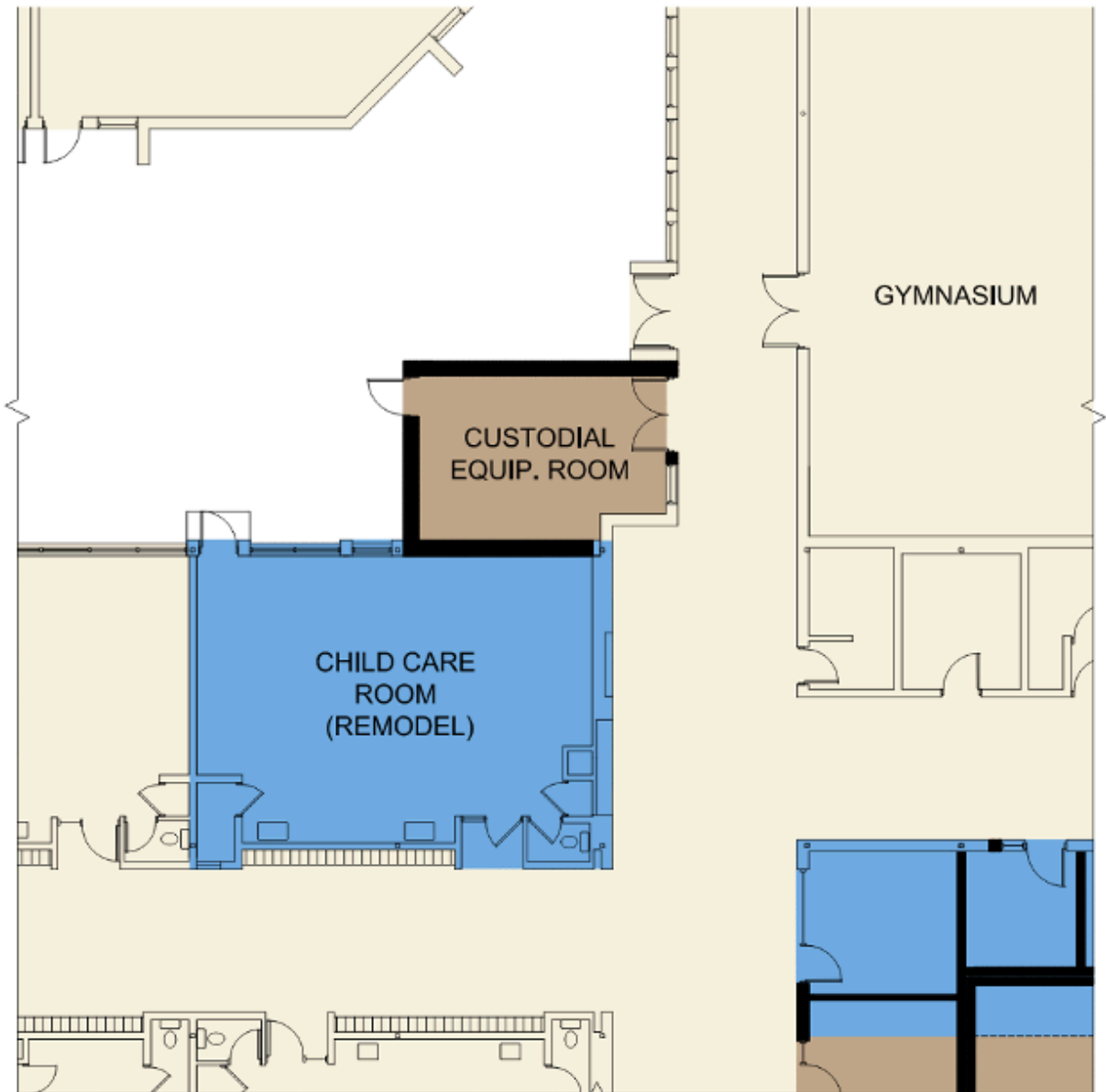
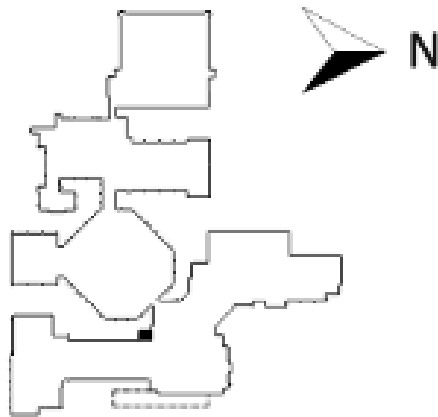


Additional offices and maintenance upgrades

Custodial equipment room addition and remodel of existing offices into a childcare room

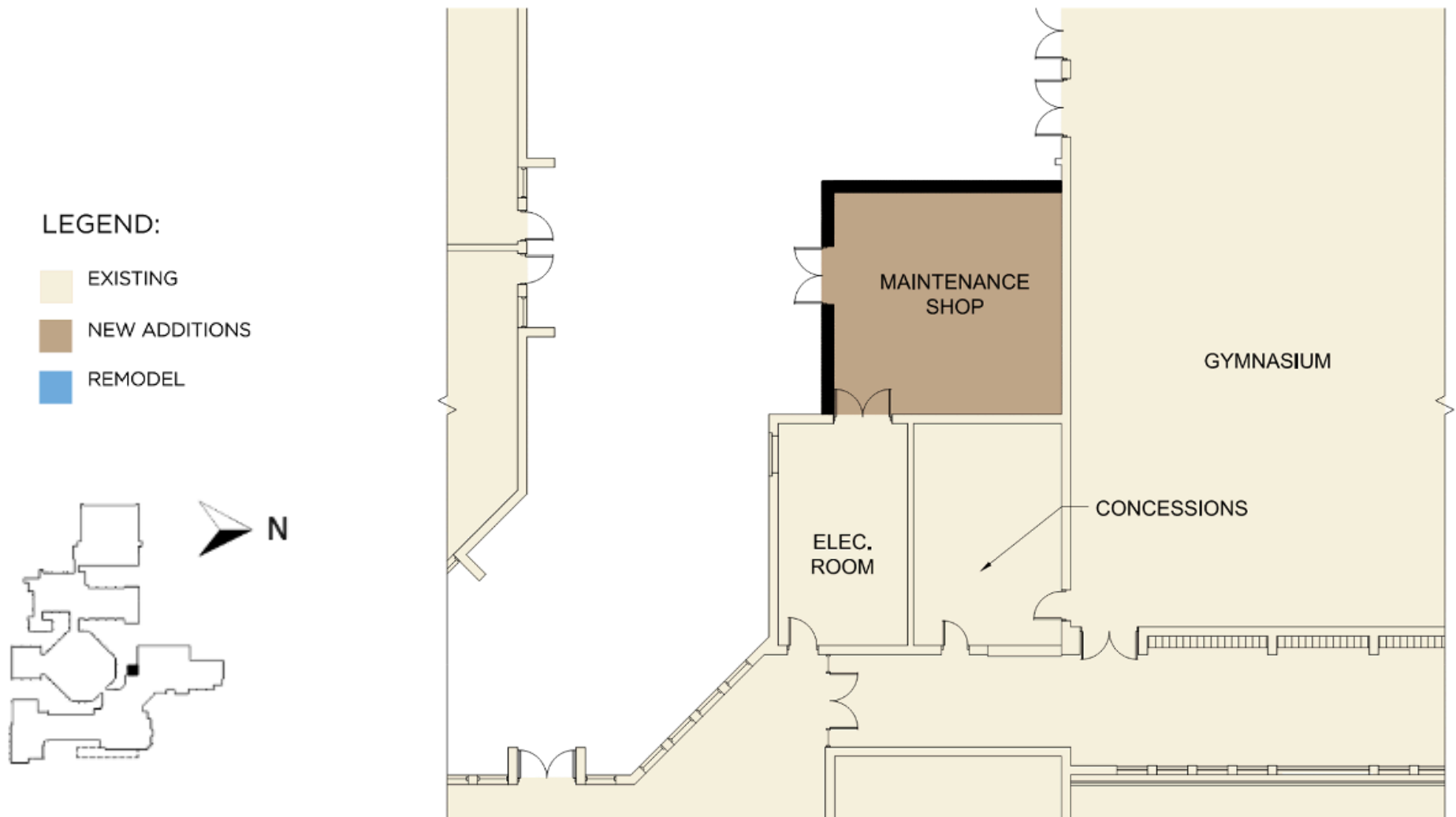
LEGEND:

- EXISTING
- NEW ADDITIONS
- REMODEL

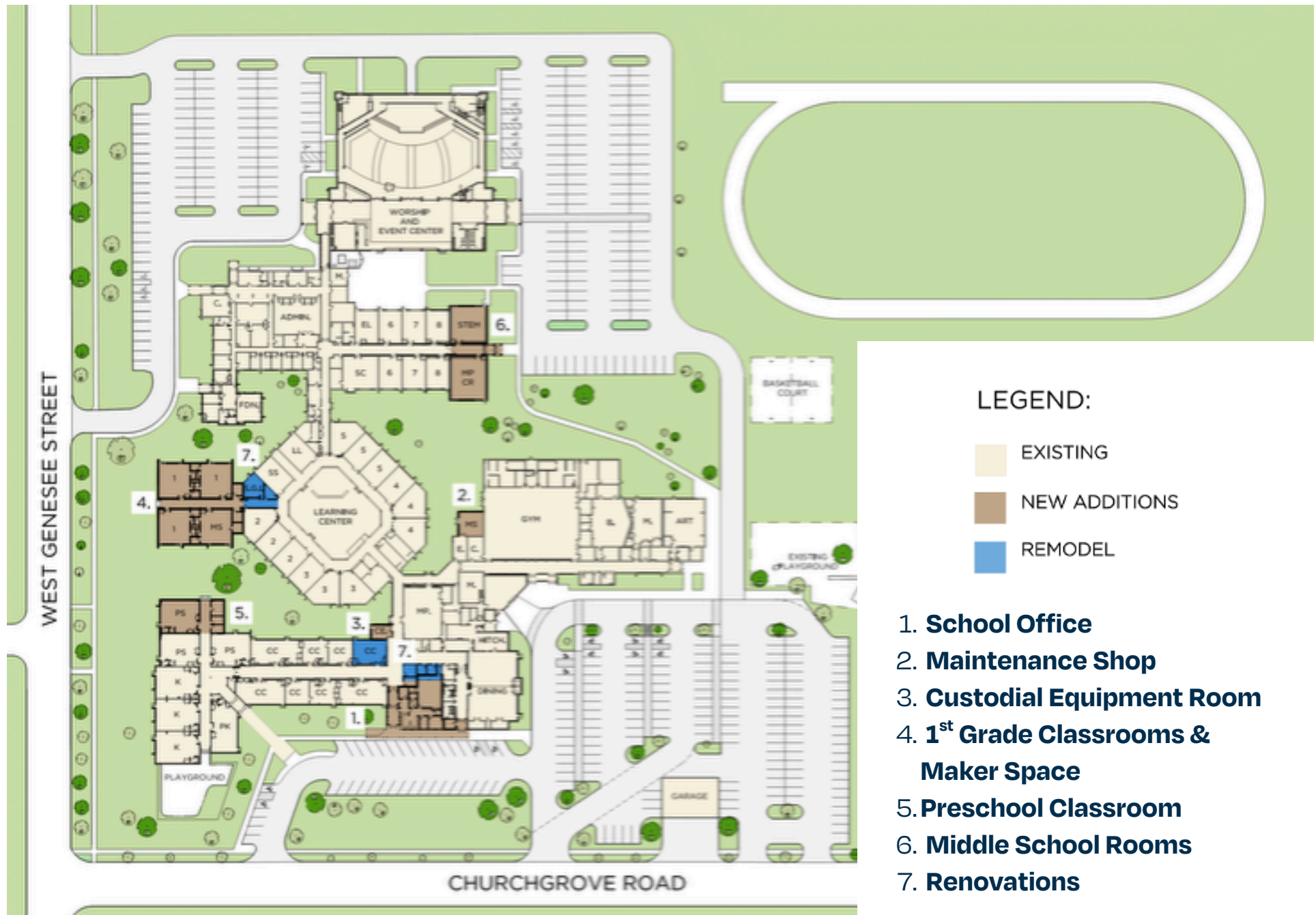


Additional offices and maintenance upgrades

Maintenance Shop addition to improve safety and storage



Proposed Master Plan



Cost Breakdown

Each project area includes new and renovated work, furnishings, equipment, design and construction, and architectural and engineering fees.

| Project Area | Projected Cost |
|---|----------------|
| Office Remodel & Addition Custodial Equipment Room Maintenance Shop | \$2.5+ M |
| Learning Center Addition (3 classrooms and Maker Space) | \$3.4+ M |
| Preschool Room Addition | \$1.3+ M |
| Middle School Rooms Addition | \$2+ M |
| Financing & Other Costs | \$0.8 M |
| Goal | \$10 M |



Together We Build Campaign Goals

\$10 Million in Pledge
Commitments

High Participation
Every Card Returned
(or electronically submitted)



Returned Commitments by
November 2

Cost Impact

On-going estimated expenses

Estimated at **\$155,000/year** to cover:

One full time
custodian

One home room
teacher

Utilities &
insurance

This project will have no direct impact on the annual student fee.



St. Lorenz
LUTHERAN CHURCH & SCHOOL

Together Campaign Team



AMY GROSSI

BRAD HUBBARD

ANDREW
AHLSCHEDE

KATRINA
KASCHINSKE

PETE BENDER

LEAH KNOLL

JEREMY FRANK

MELISSA TEBEDO
