

TOGETHER  
WE BUILD



St. Lorenz  
LUTHERAN CHURCH & SCHOOL

*And they said,  
“Let us rise up and build.”  
So they strengthened  
their hands for the good  
work.*

**Nehemiah 2:18**



**St. Lorenz**  
LUTHERAN CHURCH & SCHOOL



*For the past 180 years, St. Lorenz Lutheran Church and School has faithfully answered the call to not only provide a Christ-centered education, but an education built on high expectations and lifelong relationships.*

*In the last three years, we have added three amazing teachers to provide students with loving guidance (and a safe environment to learn and develop). Due to our commitment to building personal relationships with each student and expanding curriculum opportunities, we have filled all of our available space.*

*We want to make sure that we continue to offer families a school where Jesus is shared, others are served, and students are given many experiences for academic and spiritual growth.*

*In His Service,*

*Leah Knoll*

*School Principal*



***Together We Build*** is not about  
repairing something broken—  
it's about **strengthening** the  
foundation of **who we are.**



**St. Lorenz**  
LUTHERAN CHURCH & SCHOOL



# Together We Build



## **Christ-Centered Education**

Every day, children experience the Gospel and learn how to live as disciples of Jesus.



## **Strong Academic Foundation**

Our students are equipped for continued education with the skills, confidence, and character to succeed.



## **Creativity and Character**

Through art, music, physical education, and technology, we develop God-given talents for His glory.



## **Generational Impact**

These upgrades will bless families today and for decades to come.



**St. Lorenz**  
LUTHERAN CHURCH & SCHOOL

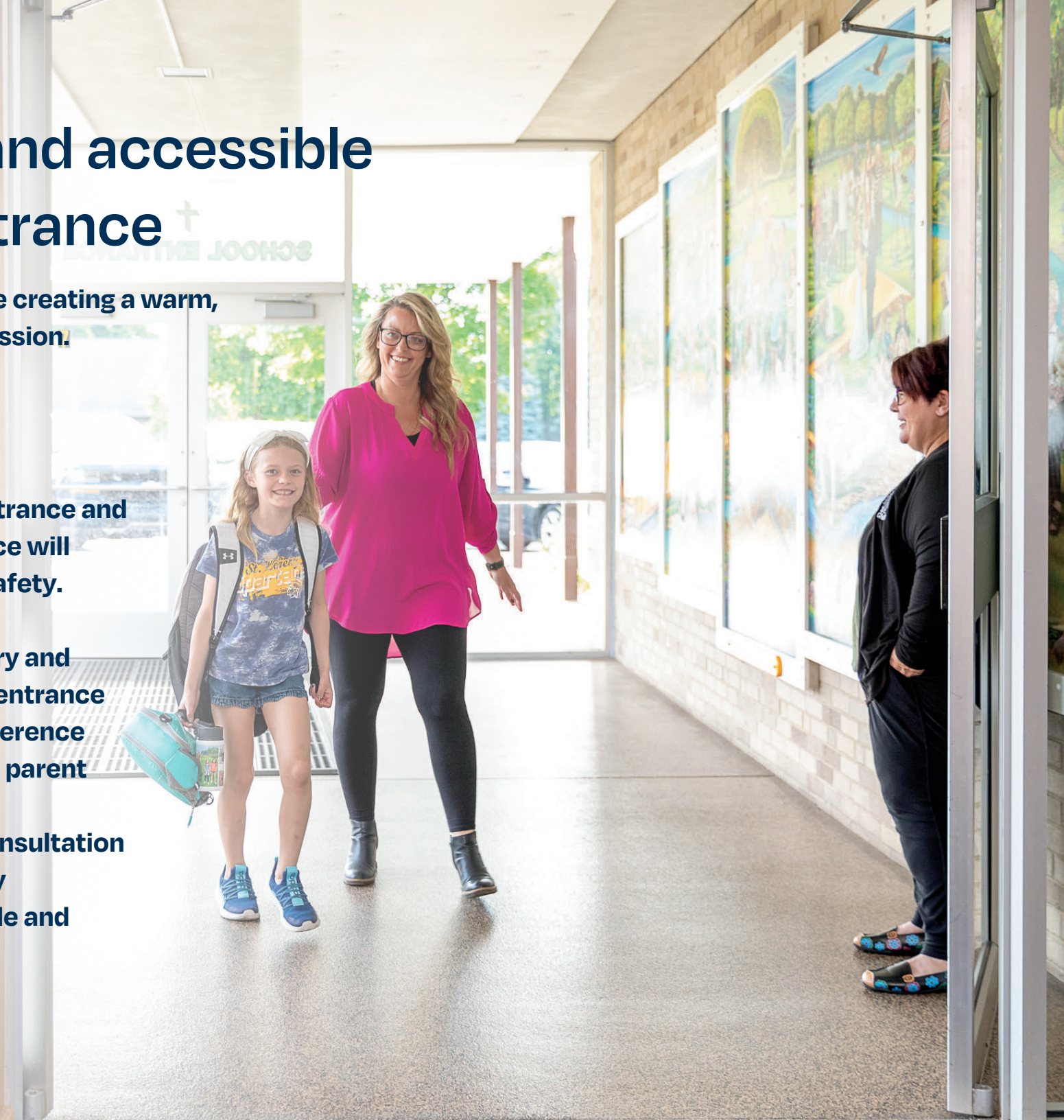


# A secure and accessible school entrance

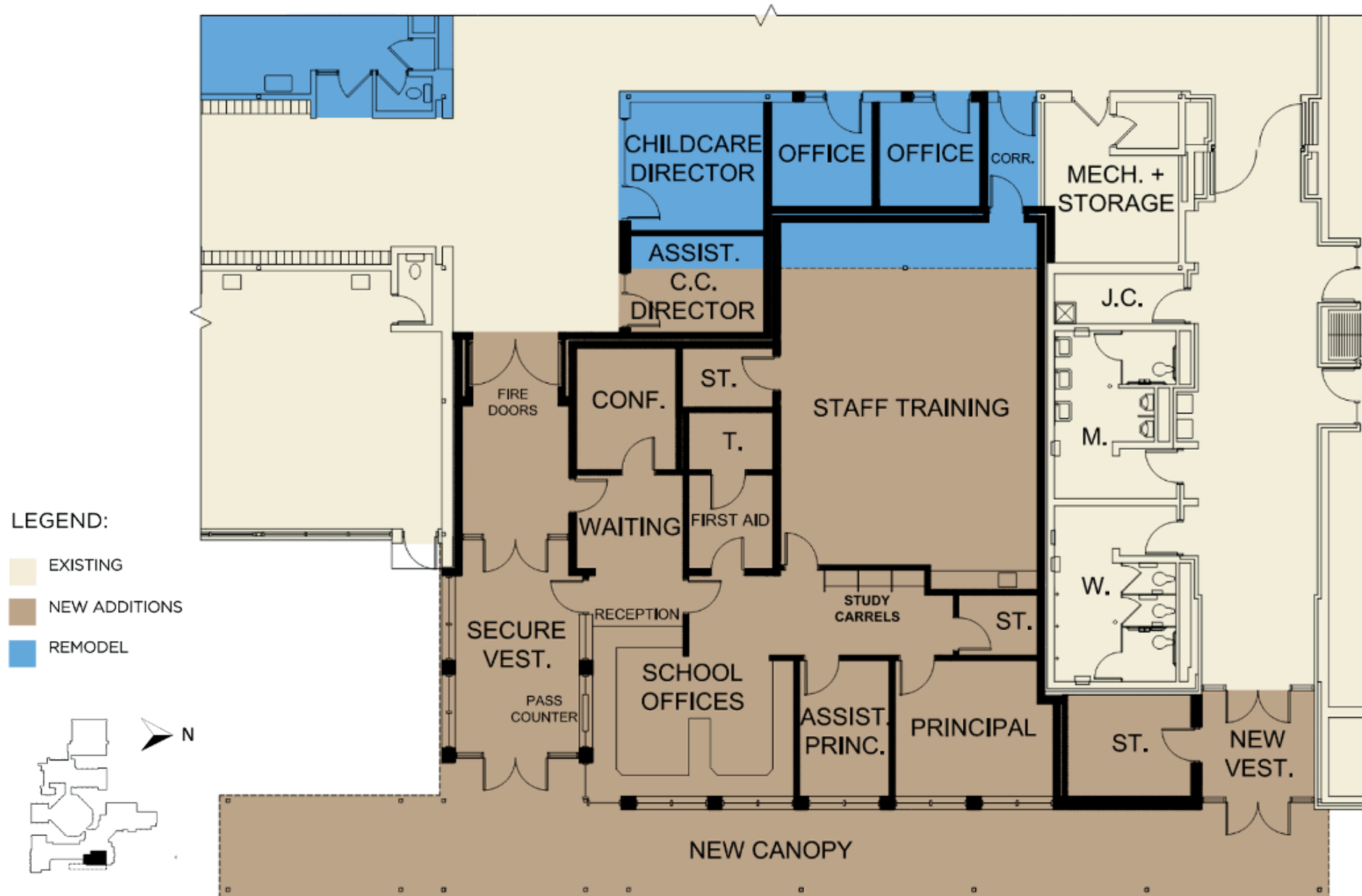
Improving safety while creating a warm, welcoming first impression.

A secure new main entrance and redesigned office space will improve access and safety.

- Secure visitor entry and separate student entrance
- New training/conference room for staff and parent meetings
- Therapy space, consultation room, and sick bay
- Expanded vestibule and storage space



# A secure and accessible school entrance





# A secure and accessible school entrance





# Additional Classrooms

**Relationship-centered student-teacher ratios builds strong Christian relationships for better learning, behavior, faith growth, and parent connections.**

**Plan for four new classrooms to be added: three for 1st grade and one Maker Space for all elementary students to engage in creative, hands-on learning. Also includes a new preschool room and a new family bathroom in the Early Childhood Wing.**

- **Enables three classes per grade (1–5)**
- **Provides separate, dedicated rooms for preschool and childcare (currently shared)**
- **Staffing Impact: One additional elementary teacher**



# Additional Classrooms

Three new 1<sup>st</sup> grade classrooms with bathrooms, a Maker Space, and small group instruction room.

## LEGEND:

- EXISTING
- NEW ADDITIONS
- REMODEL





# Additional Classrooms

## 1st Grade Classrooms

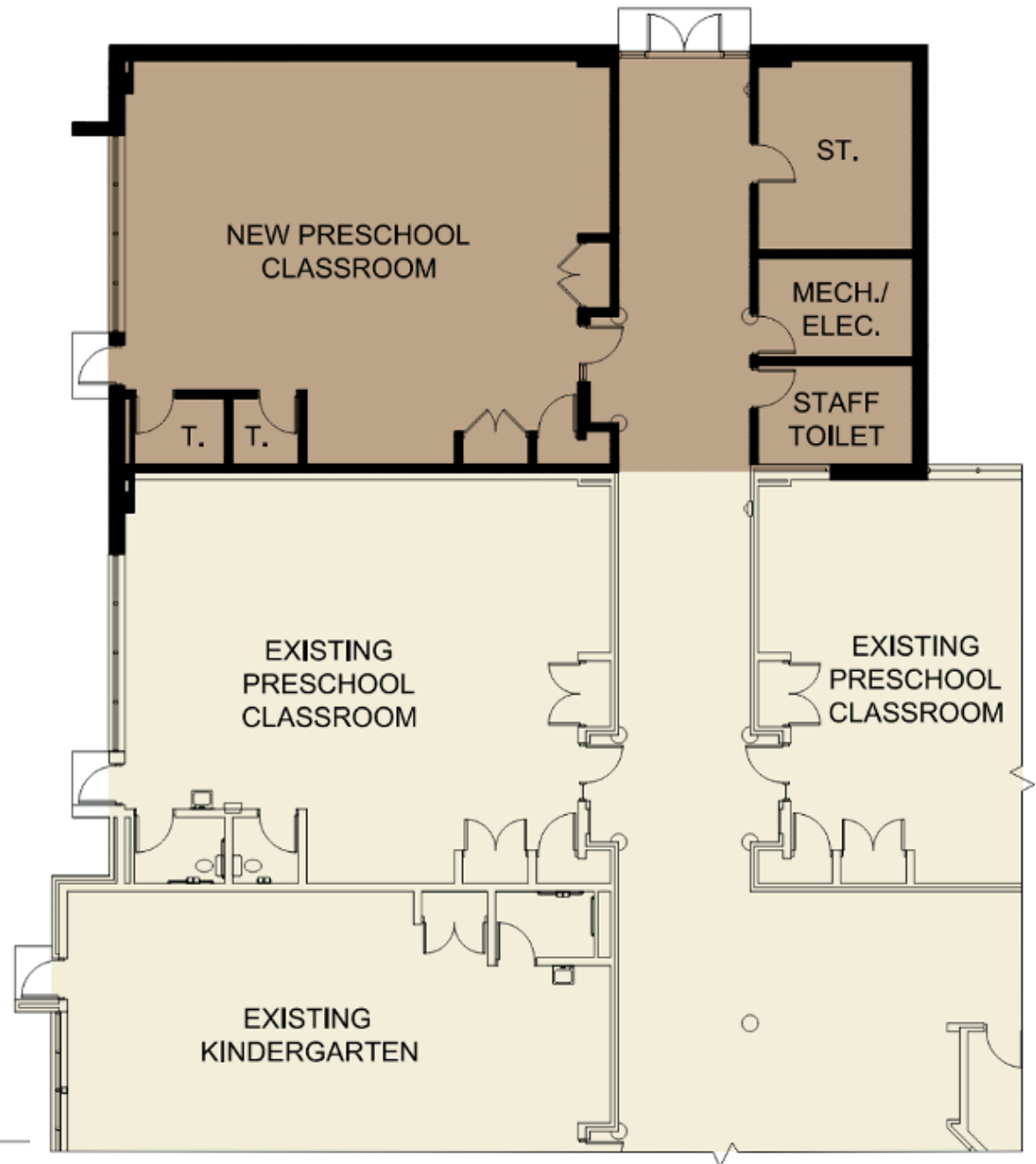


# Additional Classrooms

One new preschool classroom, storage room, and family bathroom in Early Childhood Wing

## LEGEND:

- EXISTING
- NEW ADDITIONS





# Additional Classrooms

## Preschool Classroom





# New learning spaces

Adding new spaces for a more vibrant and modern learning environment.

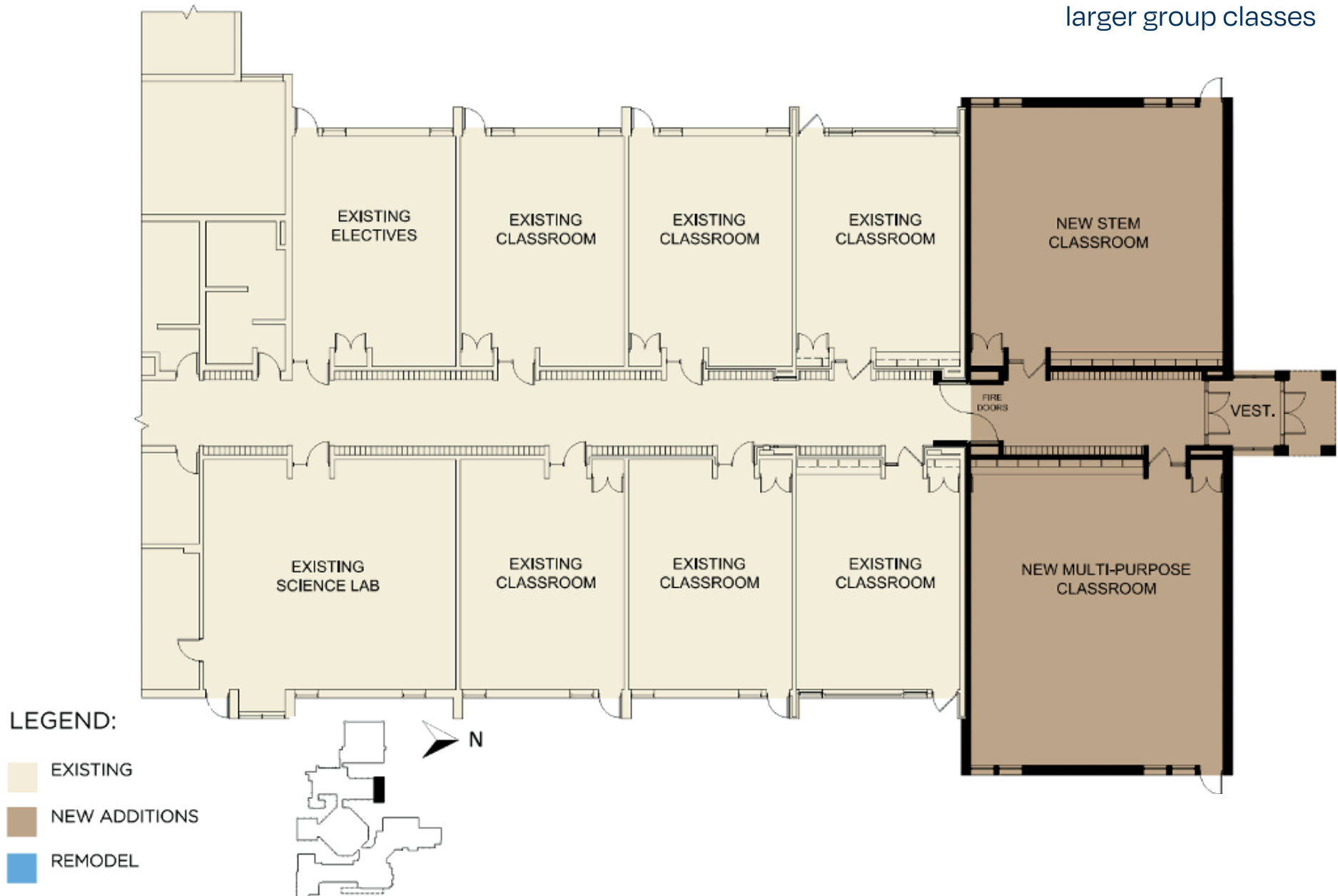
A new multi-use classroom and a STEM lab added to the middle school wing.

- **Large Multi-Use Classroom** (1,580 ft<sup>2</sup>) for combined classes and events
- **Replaces the use of the unsecured Adult Education room**
- **STEM Classroom** for robotics, engineering, electronics, 3D printing, and more
- **Staffing Impact:** No additional staff required



# New learning spaces

Adding two new classrooms in middle school hallway for STEM activities and to accomodate larger group classes





# New learning spaces





# Additional offices and maintenance upgrades

Supporting our school, staff, and administration.

**Additional office spaces for our leaders and expanded spaces to support our maintenance and custodial equipment.**

- Relocated offices for Principal, Assistant Principal, and Early Childhood Directors
- New custodial equipment room to accommodate modern equipment, including floor cleaners
- Maintenance shop addition to improve safety and storage

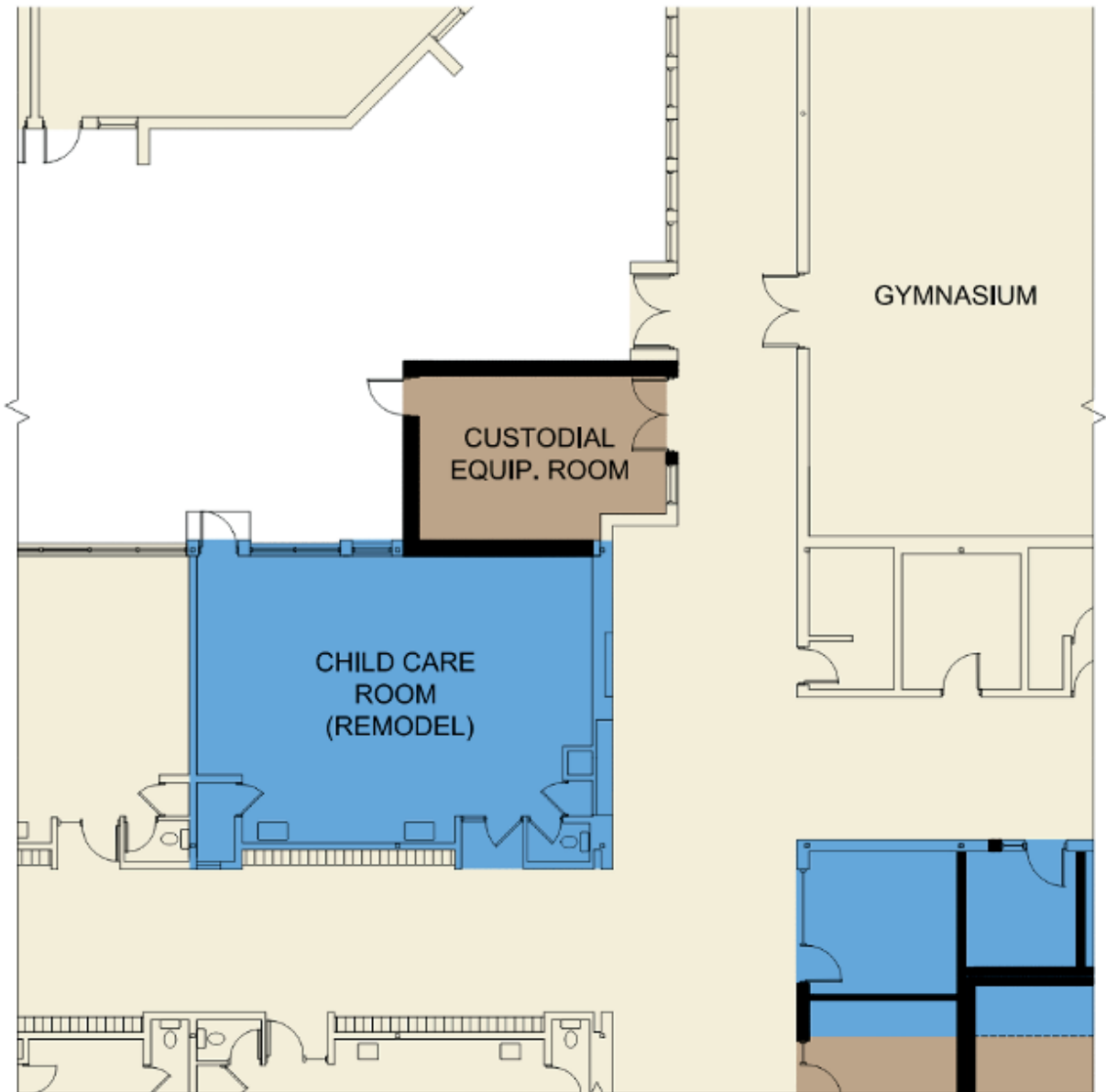


# Additional offices and maintenance upgrades

Custodial equipment room addition and remodel of existing offices into a childcare room

## LEGEND:

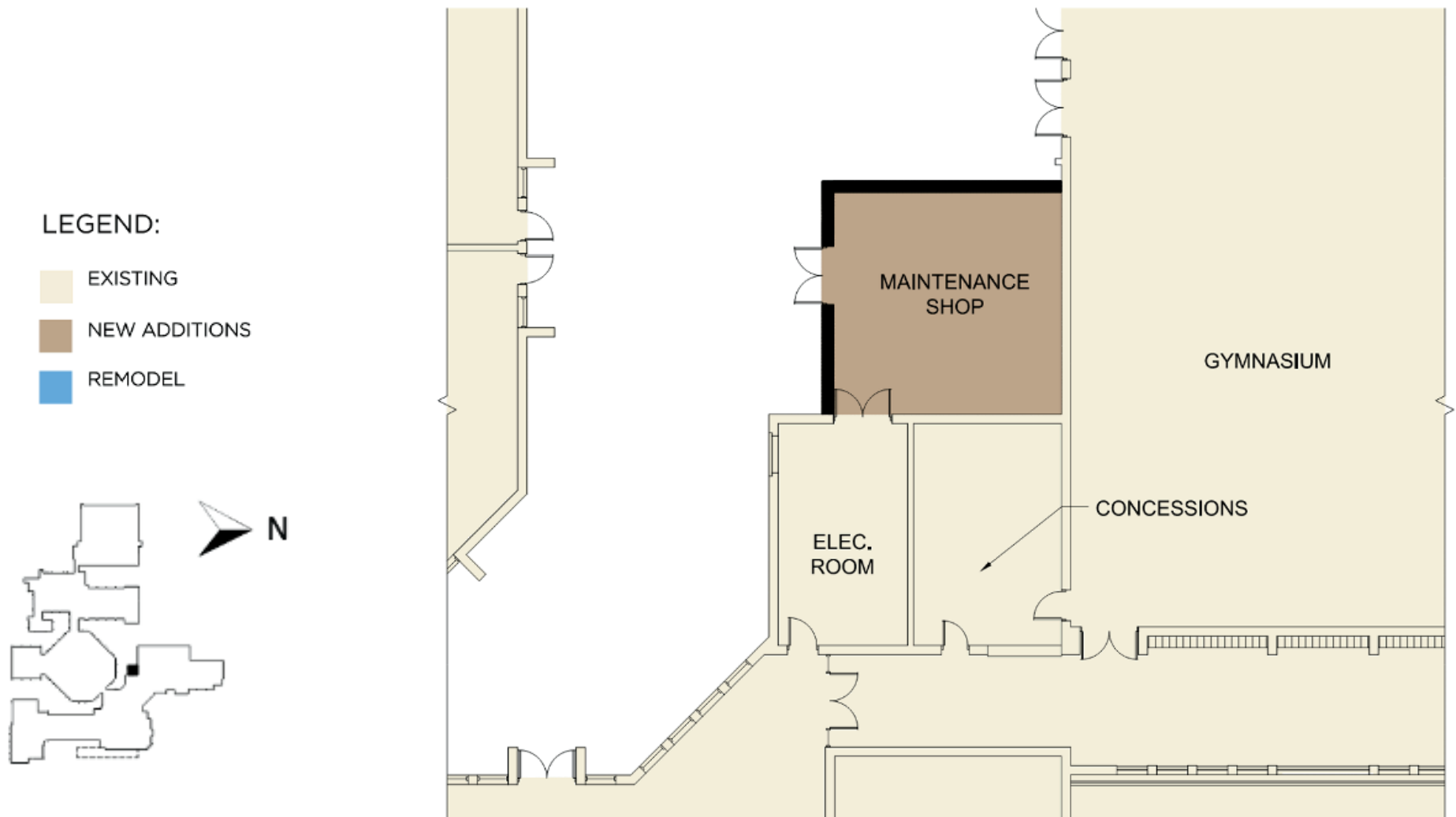
- EXISTING
- NEW ADDITIONS
- REMODEL



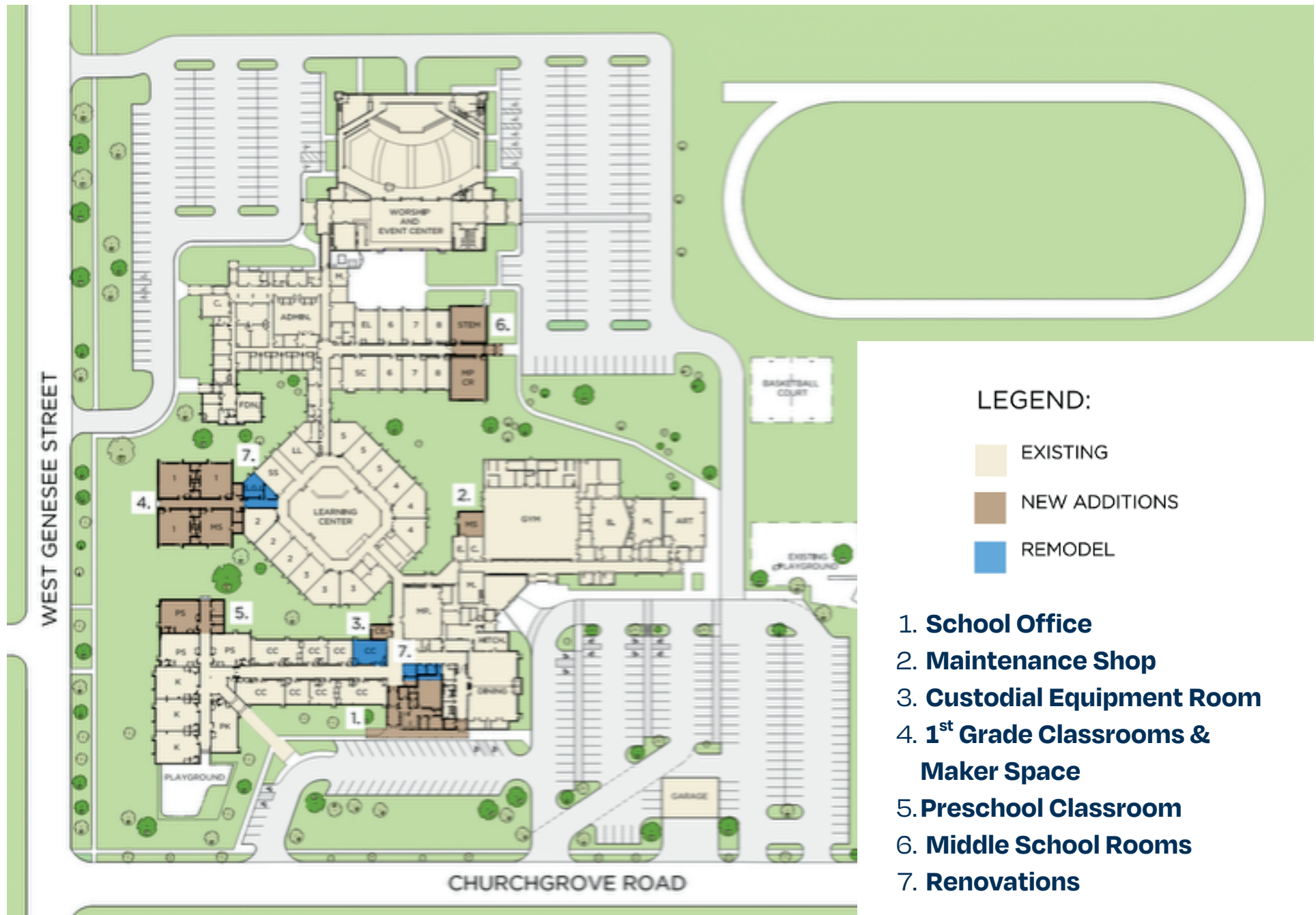


# Additional offices and maintenance upgrades

Maintenance Shop addition to improve safety and storage



# Proposed Master Plan



# Cost Breakdown

Each project area includes new and renovated work, furnishings, equipment, design and construction, and architectural and engineering fees.

Project Area	Projected Cost
Office Remodel & Addition Custodial Equipment Room Maintenance Shop	\$2.5+ M
Learning Center Addition (3 classrooms and Maker Space)	\$3.4+ M
Preschool Room Addition	\$1.3+ M
Middle School Rooms Addition	\$2+ M
Financing & Other Costs	\$0.8 M
<b>Goal</b>	<b>\$10 M</b>



# Together We Build Campaign Goals

---

**\$10 Million in Pledge  
Commitments**

**High Participation  
Every Card Returned  
(or electronically submitted)**



**Returned Commitments by  
November 2**

# Cost Impact

On-going estimated expenses

Estimated at **\$155,000/year** to cover:

One full time  
custodian

One home room  
teacher

Utilities &  
insurance

This project will have no direct impact on the annual student fee.



**St. Lorenz**  
LUTHERAN CHURCH & SCHOOL

---

# Together Campaign Team

---



AMY GROSSI

BRAD HUBBARD

ANDREW  
AHLSCHEDE

KATRINA  
KASCHINSKE

PETE BENDER

LEAH KNOLL

JEREMY FRANK

MELISSA TEBEDO

---